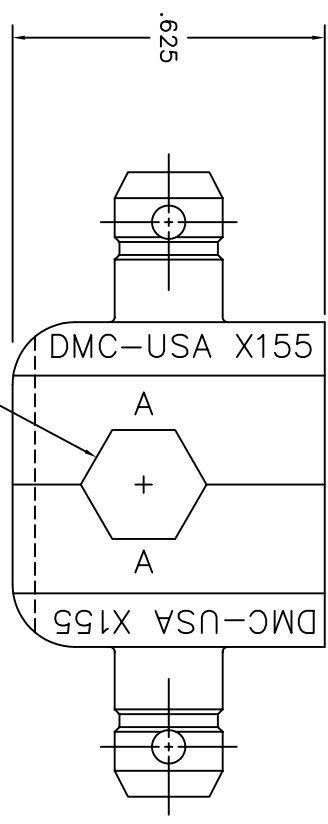
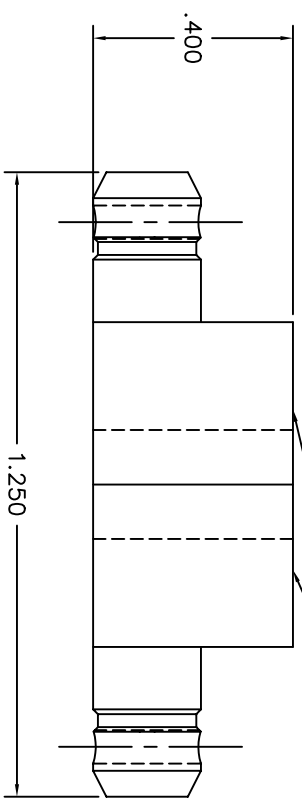


"M22520/10-23"  
"CAGE 11851"



REVISIONS				
REV. NUMBER	ECO. NUMBER	DESCRIPTION	BY DATE	APP'D DATE
1		ORIGINAL RELEASE	KMS 7/23/87	MGS 7/23/87

RESTRICTED & CONFIDENTIAL		MATERIAL		ITEM		PART NO.		QTY.		DESCRIPTION/REMARKS	
CONFIDENTIAL PROPERTY OF DANIELS MANUFACTURING CORP. NOT TO BE DISCLOSED TO OTHERS. REPRODUCED OR USED FOR ANY OTHER PURPOSE, EXCEPT AS AUTHORIZED IN WRITING BY DANIELS MANUFACTURING.		HEAT TREAT		DRN. KMS 7/23/87		DATE 7/23/87				DANIELS MANUFACTURING CORP. ORLANDO, FLORIDA CAGE 11851	
MUST BE RETURNED TO DANIELS MANUFACTURING FOR CREDIT ON ORDER OR OTHER PURPOSE FOR WHICH SENT.		FINISH		CHK'D. MGS 7/23/87		DATE 7/23/87				(M22520/10-23) DIE SET ENVELOPE DRAWING	
DO NOT SCALE DRAWING		NOTE: THIS DRAWING IS AN OUTLINE DRAWING OF THE RESPECTIVE DMC PART NUMBER INDICATED. ACTUAL DMC PART NUMBER WITHOUT THE "-ENV" SUFFIX.		APP'D. EN 7/23/87		DATE 7/23/87		WHERE USED: SIZE B SCALE 2X POSTING		CAD P/N: X155-ENV SHEET 1 OF 1 DMC NO. X155-ENV REV. 1	

**UNCONTROLLED DOCUMENT  
WILL NOT BE UPDATED**