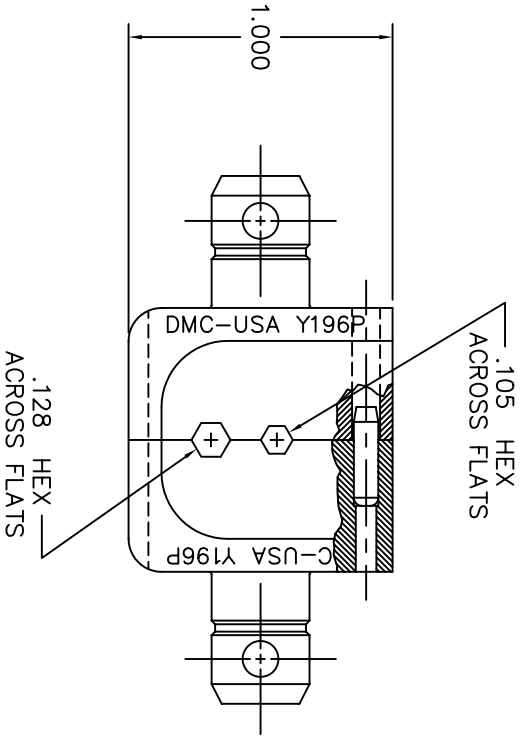
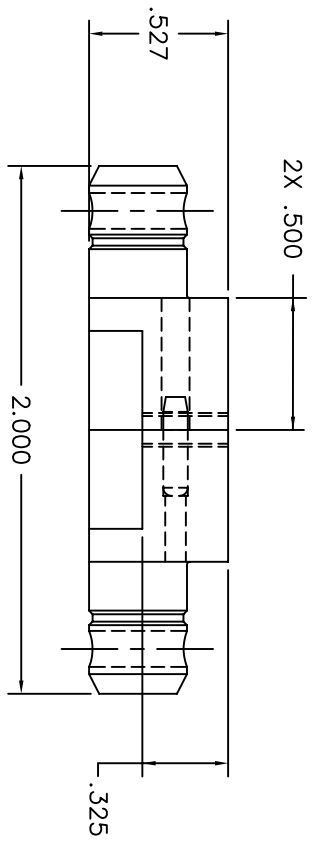



REVISIONS				
REV. SYMB.	E.C.O. NUMBER	DESCRIPTION	BY DATE	APP'D DATE
1		ORIGINAL RELEASE	LW 2/28/91	PD 2/28/91



**UNCONTROLLED DOCUMENT
WILL NOT BE UPDATED**

RESTRICTED & CONFIDENTIAL CONFIDENTIAL PROPERTY OF DANIELS MANUFACTURING CORP. NOT TO BE DISCLOSED TO OTHERS, REPRODUCED OR USED FOR ANY OTHER PURPOSE, EXCEPT BY DANIELS MANUFACTURING CORP. ON COMPLETION OF ORDER OR OTHER PURPOSE FOR WHICH INT.		MATERIAL		FINISH	
		HEAT TREAT			
ITEM	PART NO.	QTY.	DESCRIPTION/REMARKS		
DRN. LW	DATE 2/28/91		 DANIELS MANUFACTURING CORP. ORLANDO, FLORIDA CAGE 11851		
CHK'D. PD	DATE 2/28/91				
APP'D. AAM	DATE 2/28/91				
NOTE: THIS DRAWING IS AN OUTLINE DRAWING OF THE RESPECTIVE DMC PART NUMBER INDICATED. ACTUAL DMC PART NUMBER WITH THE "ENV" SUFFIX.					
WHERE USED:		CAD P/N	SHEET	OF	
B 2X POSTING		Y196P-ENV	1	1	
		DMC NO. Y196P-ENV	REV.	1	

DO NOT SCALE DRAWING