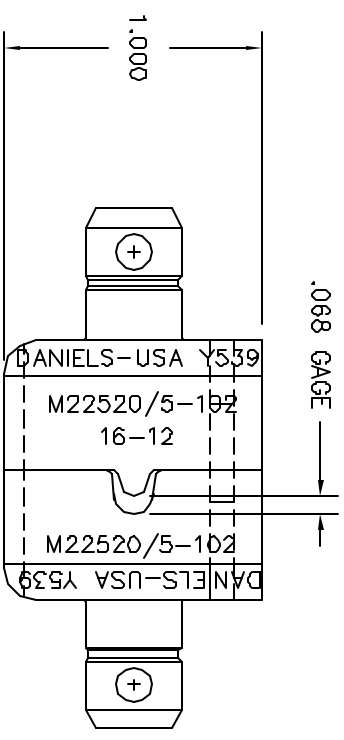
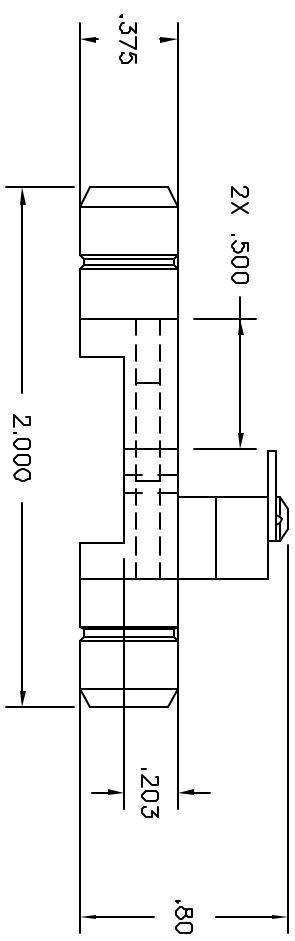


REVISIONS				
REV. STN.	EQD. NUMBER	DESCRIPTION	BY DATE	APP'D. DATE
1		ORIGINAL RELEASE	11/13/99	11/13/99



**UNCONTROLLED DOCUMENT  
WILL NOT BE UPDATED**

RESTRICTED & CONFIDENTIAL		MATERIAL		ITEM		QTY.		DESCRIPTION/REMARKS	
CONFIDENTIAL PROPERTY OF DANIELS MANUFACTURING CORP. NOT TO BE DISCLOSED TO OTHERS, REPRODUCED OR USED FOR ANY OTHER PURPOSE, EXCEPT AS AUTHORIZED IN WRITING BY DANIELS MANUFACTURING CORP. ON COMPLETION OF ORDER OR OTHER PAPER FOR WHICH LENT.		HEAT TREAT		DIE		DATE		<b>Daniel's Manufacturing Corp.</b> DANIELS MANUFACTURING CORP. ORLANDO, FLORIDA CASE 11851	
		FINISH		DIE		DATE			
DO NOT SCALE DRAWING		FINISH		DIE		DATE		DIE SET (M22520/5-102) ENVELOPE DRAWING	
NOTE: THIS DRAWING IS AN OUTLINE DRAWING OF THE RESPECTIVE DIE PART NUMBER AND PART NUMBER OF DRAWING NUMBER WITHOUT THE "-ENV" SUFFIX.		WHEN USED:		CAD P/N		SHEET OF		REV.	
		B SIZE		Y539-ENV		1		1	
		2X BEALE		Y539-ENV		1		1	
		FINISHING		Y539-ENV		1		1	